

Standard Eurobarometer 102

Autumn 2024



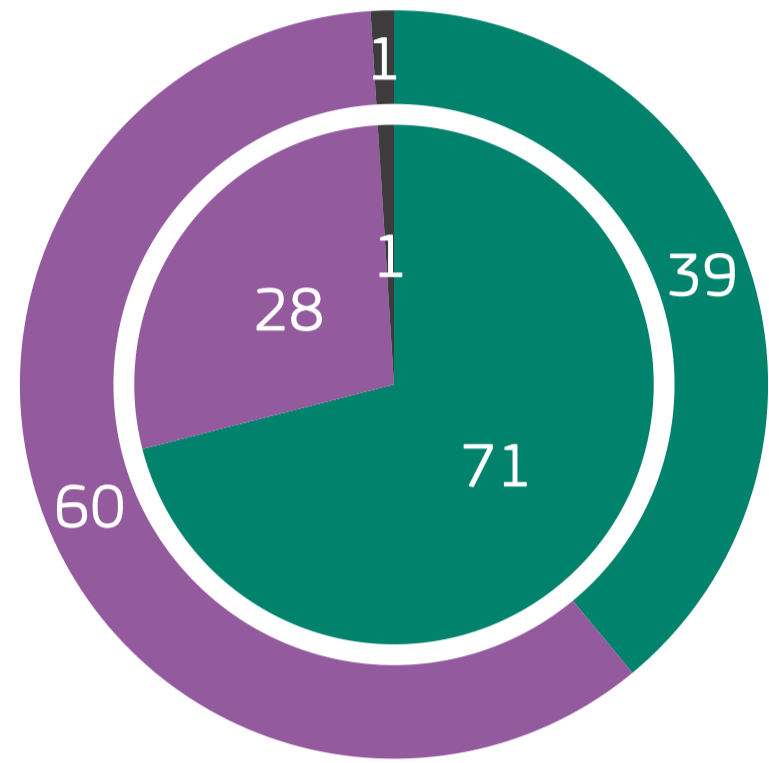
Ireland

Fieldwork EU: 10 October - 03 November 2024
TOTAL EU: 26 525 INTERVIEWS

Fieldwork IRELAND: 10 October - 31 October 2024
TOTAL IRELAND: 1 006 INTERVIEWS

1. LIFE IN THE EUROPEAN UNION

QA1.2. How would you judge the current situation in each of the following?:-The situation of the (NATIONALITY) economy (%)



● Total 'Good' ● Total 'Bad' ● Don't know

EU27 Outer Pie

IE Inner Pie

Total 'Good'	39	=	71	▲11
Total 'Bad'	60	▲2	28	▼9
Don't know	1	▼2	1	▼2

▲▼ (ST102 Oct/Nov 2024 - ST101 Apr/May 2024)

QA1. How would you judge the current situation in each of the following? (%)

The financial situation of your household



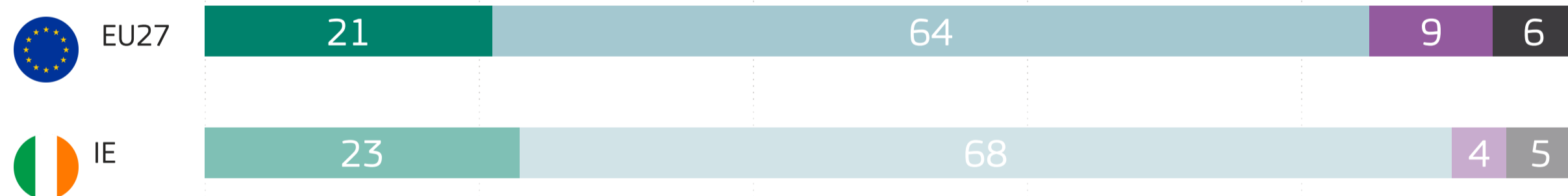
Your personal job situation



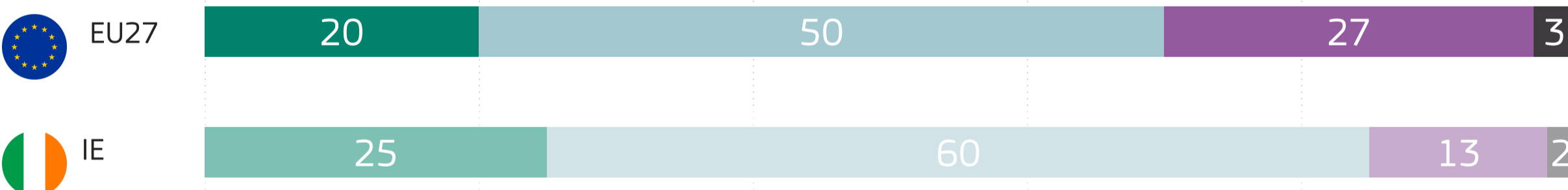
● Total 'Good' ● Total 'Bad' ● Don't know

QA2. What are your expectations for the next twelve months : will the next twelve months be better, worse or the same, when it comes to...? (%)

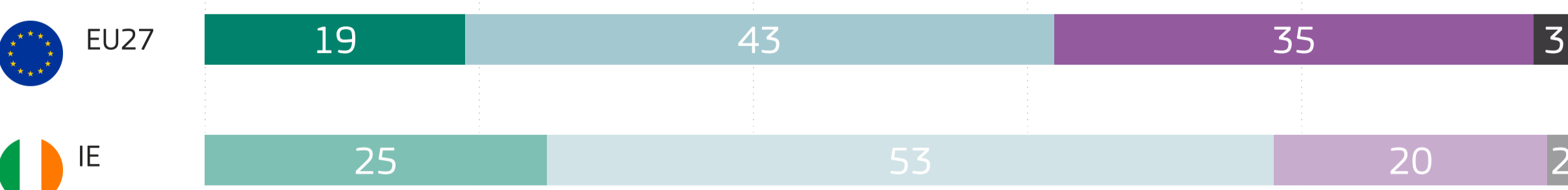
Your personal job situation



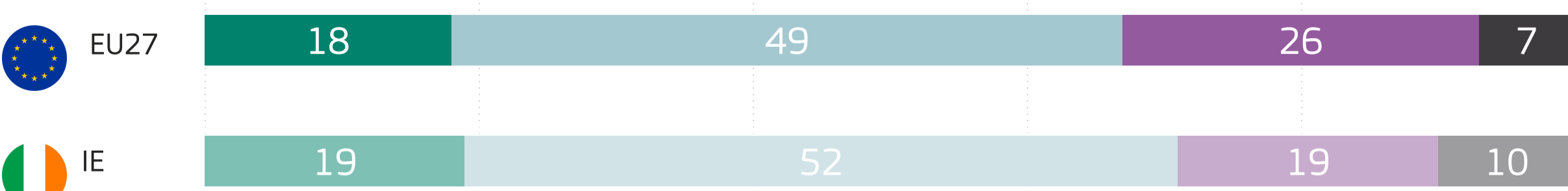
The employment situation in (OUR COUNTRY)



The economic situation in (OUR COUNTRY)



The economic situation in the EU



● Better ● The same ● Worse ● Don't know

QA2.3. What are your expectations for the next twelve months : will the next twelve months be better, worse or the same, when it comes to...? :-The economic situation in (OUR COUNTRY) (%)

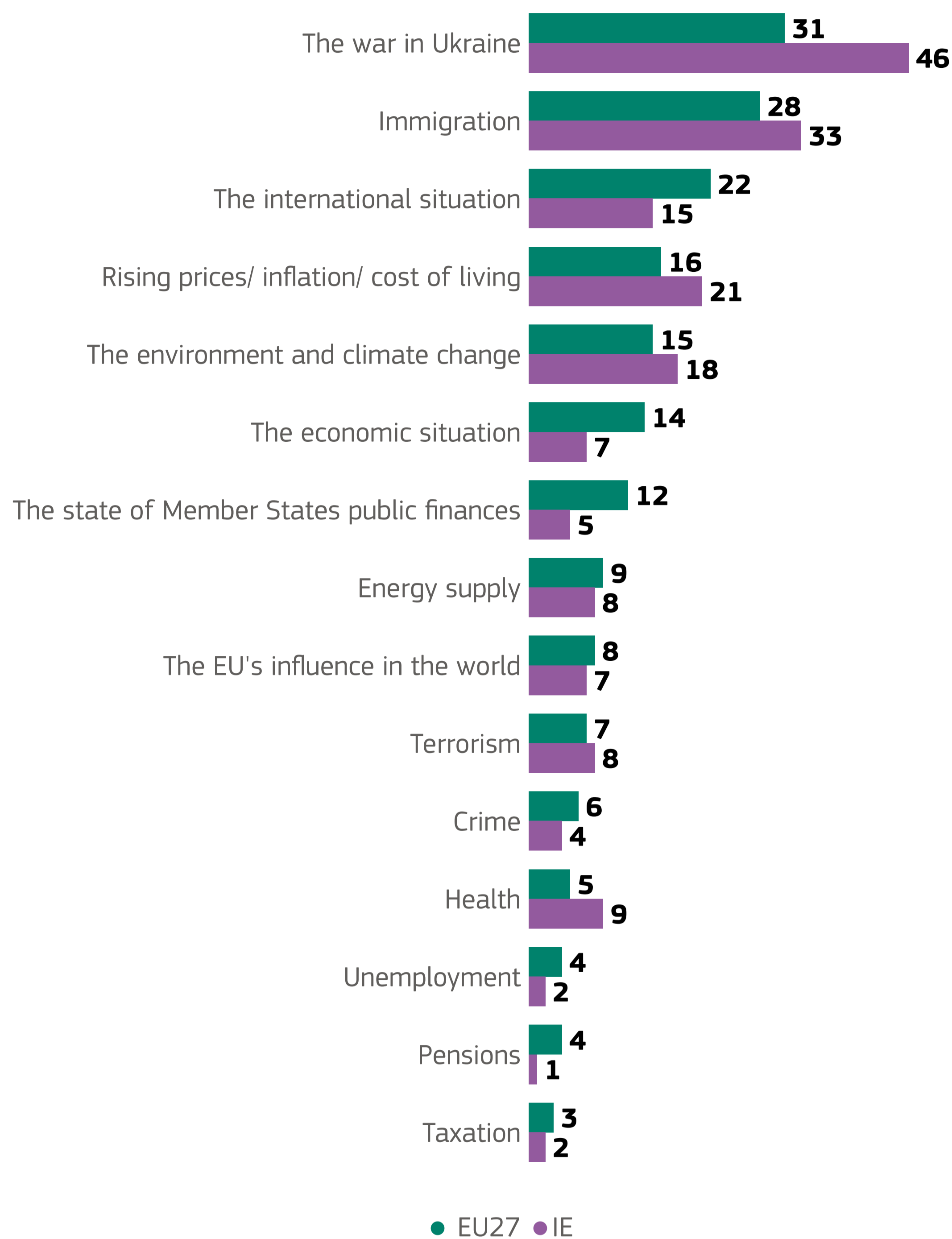
Better	19	▼2	25	▲1
The same	43	▲3	53	▲7
Worse	35	=	20	▼4
Don't know	3	▼1	2	▼4

▲▼ (ST102 Oct/Nov 2024 - ST101 Apr/May 2024)

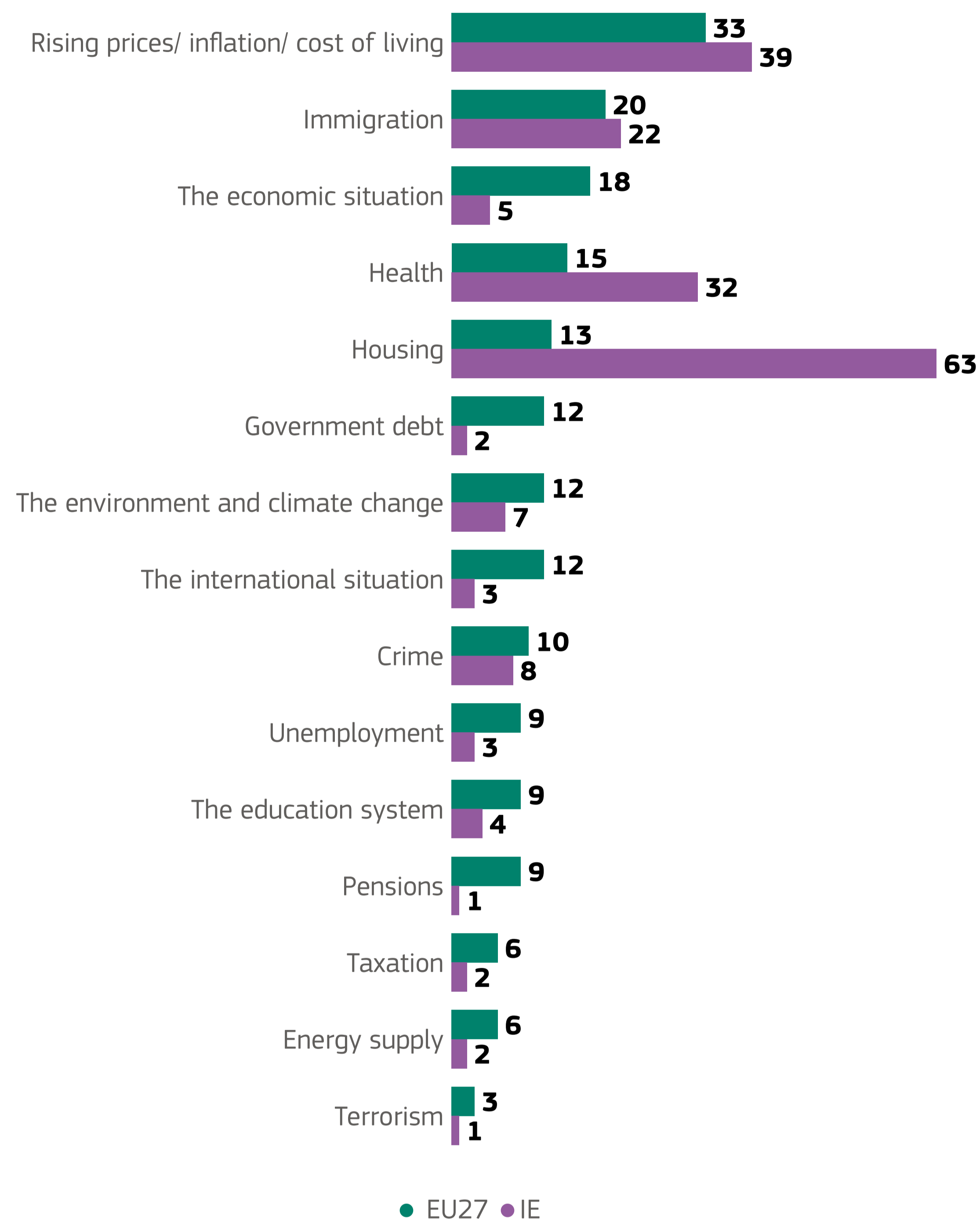


1. LIFE IN THE EUROPEAN UNION

QA5. What do you think are the two most important issues facing the EU at the moment? (MAX. 2 ANSWERS) (%)



QA3. What do you think are the two most important issues facing (OUR COUNTRY) at the moment? (MAX. 2 ANSWERS) (%)



QA6. How much trust do you have in certain institutions? For each of the following institutions, do you tend to trust it or tend not to trust it? (%)

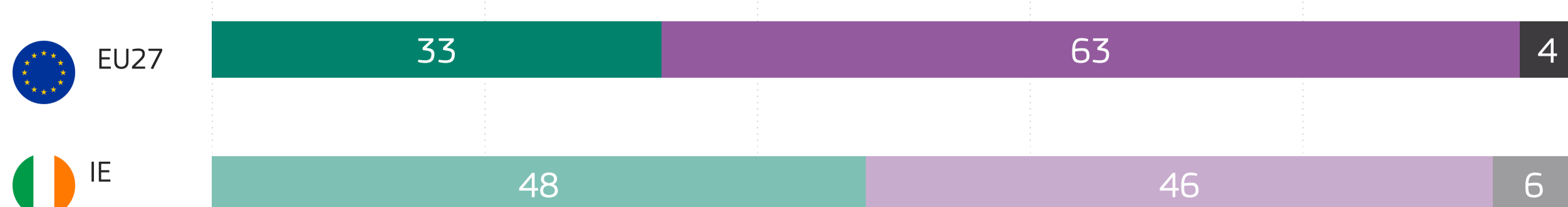
The European Union



The (NATIONALITY PARLIAMENT)



The (NATIONALITY) Government



● Tend to trust ● Tend not to trust ● Don't know

QA6.8. How much trust do you have in certain institutions? For each of the following institutions, do you tend to trust it or tend not to trust it?:-The European Union (%)

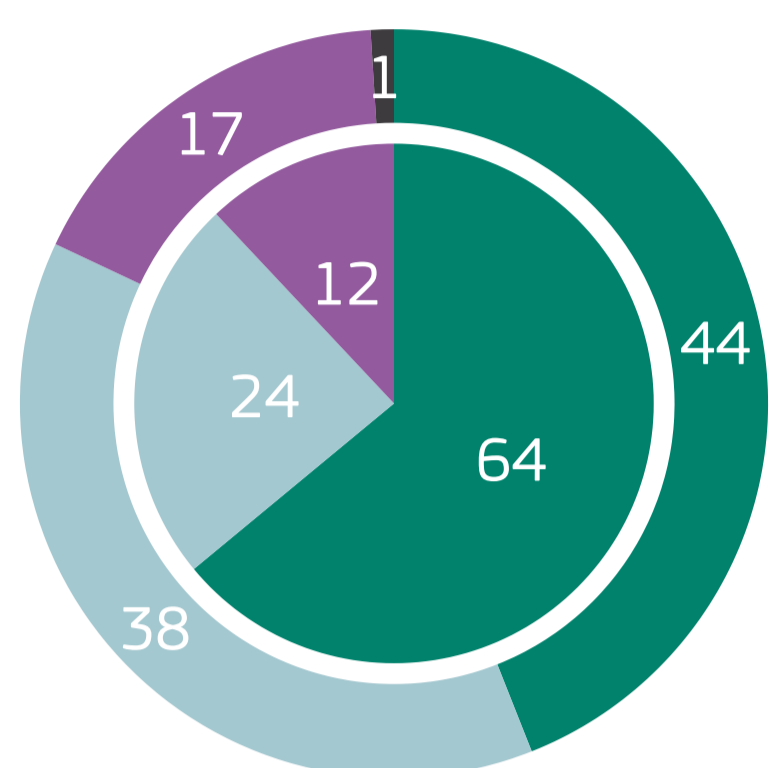


Tend to trust	51	▲2	56	=
Tend not to trust	43	▲1	33	▲3
Don't know	6	▼3	11	▼3

▲▼ (ST102 Oct/Nov 2024 - ST101 Apr/May 2024)

1. LIFE IN THE EUROPEAN UNION

D78. In general, does the EU conjure up for you a very positive, fairly positive, neutral, fairly negative or very negative image? (%)



● Total 'Positive' ● Neutral ● Total 'Negative' ● Don't know

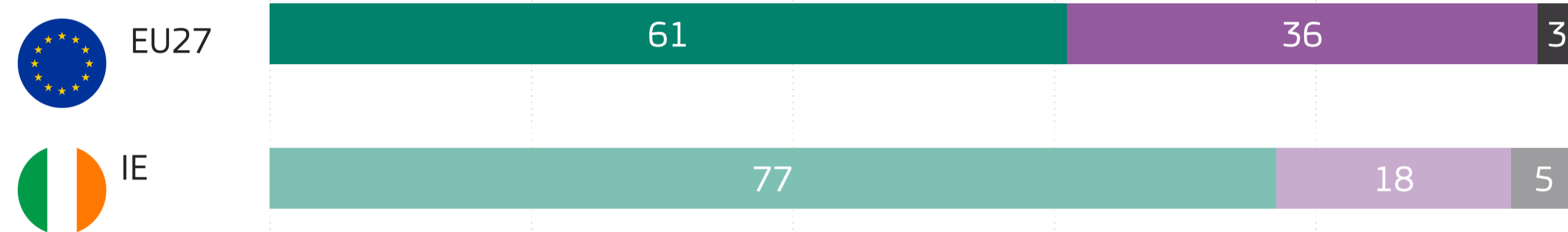
EU27 Outer Pie

IE Inner Pie

Total 'Positive'	44	= 64	▼2
Neutral	38	= 24	=
Total 'Negative'	17	▼1 12	▲2
Don't know	1	▲1	

▲▼ (ST102 Oct/Nov 2024 – ST101 Apr/May 2024)

QA11. Would you say that you are very optimistic, fairly optimistic, fairly pessimistic or very pessimistic about the future of the EU? (%)

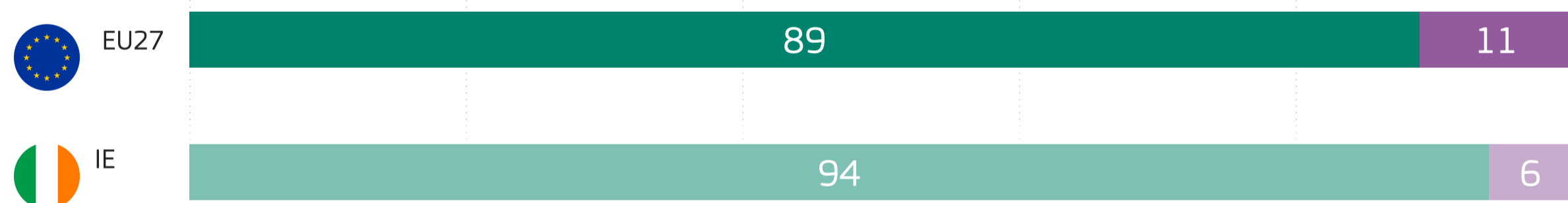


● Total 'Optimistic' ● Total 'Pessimistic' ● Don't know

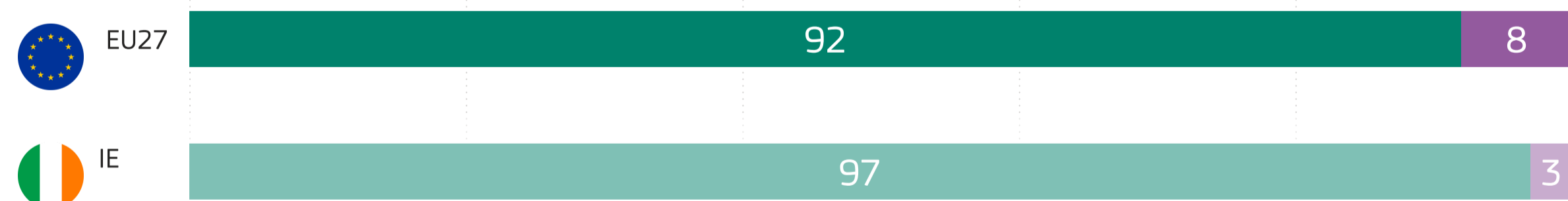
2. EUROPEAN CITIZENSHIP

QC1. Please tell how attached you feel to... (%)

Your city/ town/ village



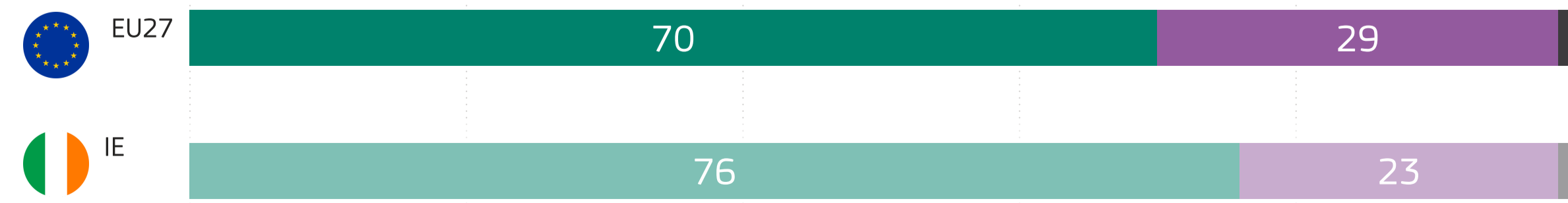
(OUR COUNTRY)



The European Union



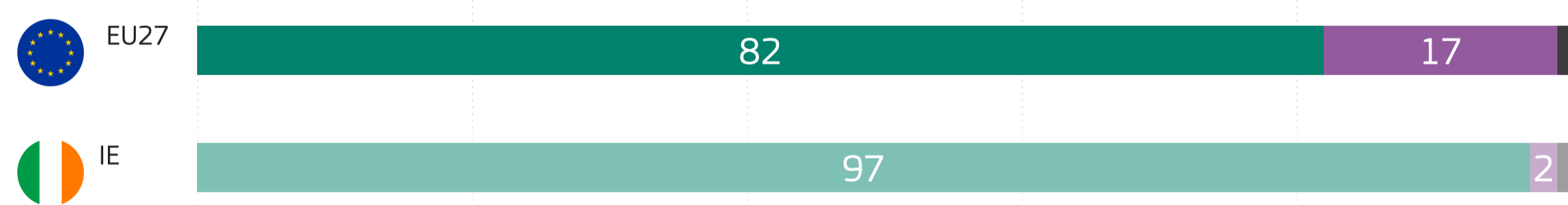
Europe



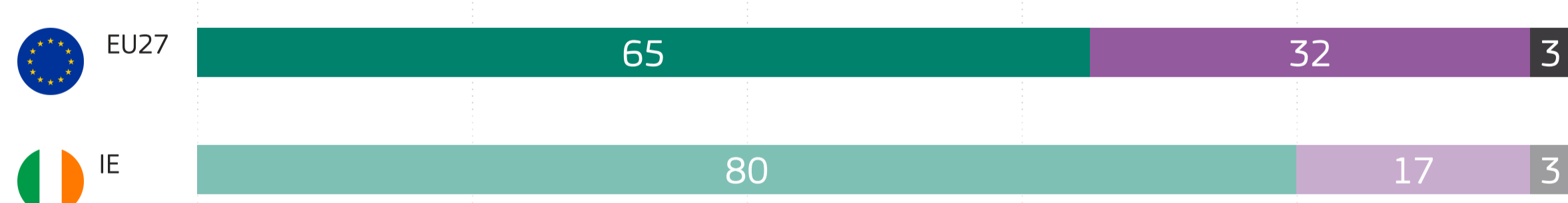
● Total 'Attached' ● Total 'Not attached' ● Don't know

QC5. For each of the following statements, please tell whether you totally agree, tend to agree, tend to disagree or totally disagree. (%)

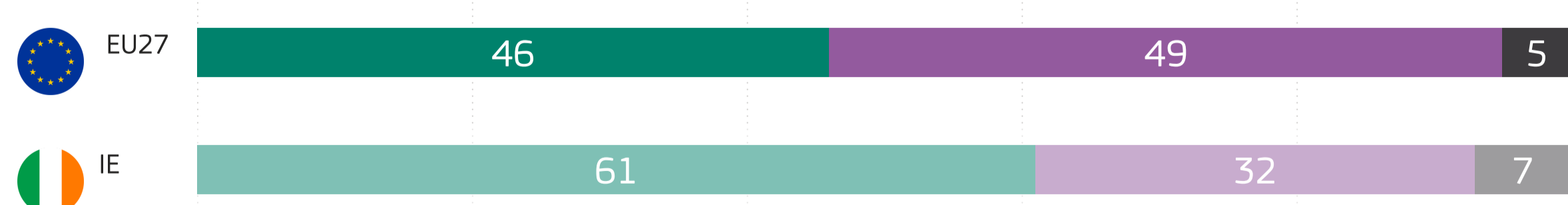
People in (OUR COUNTRY) have a lot of things in common



People in the EU have a lot of things in common



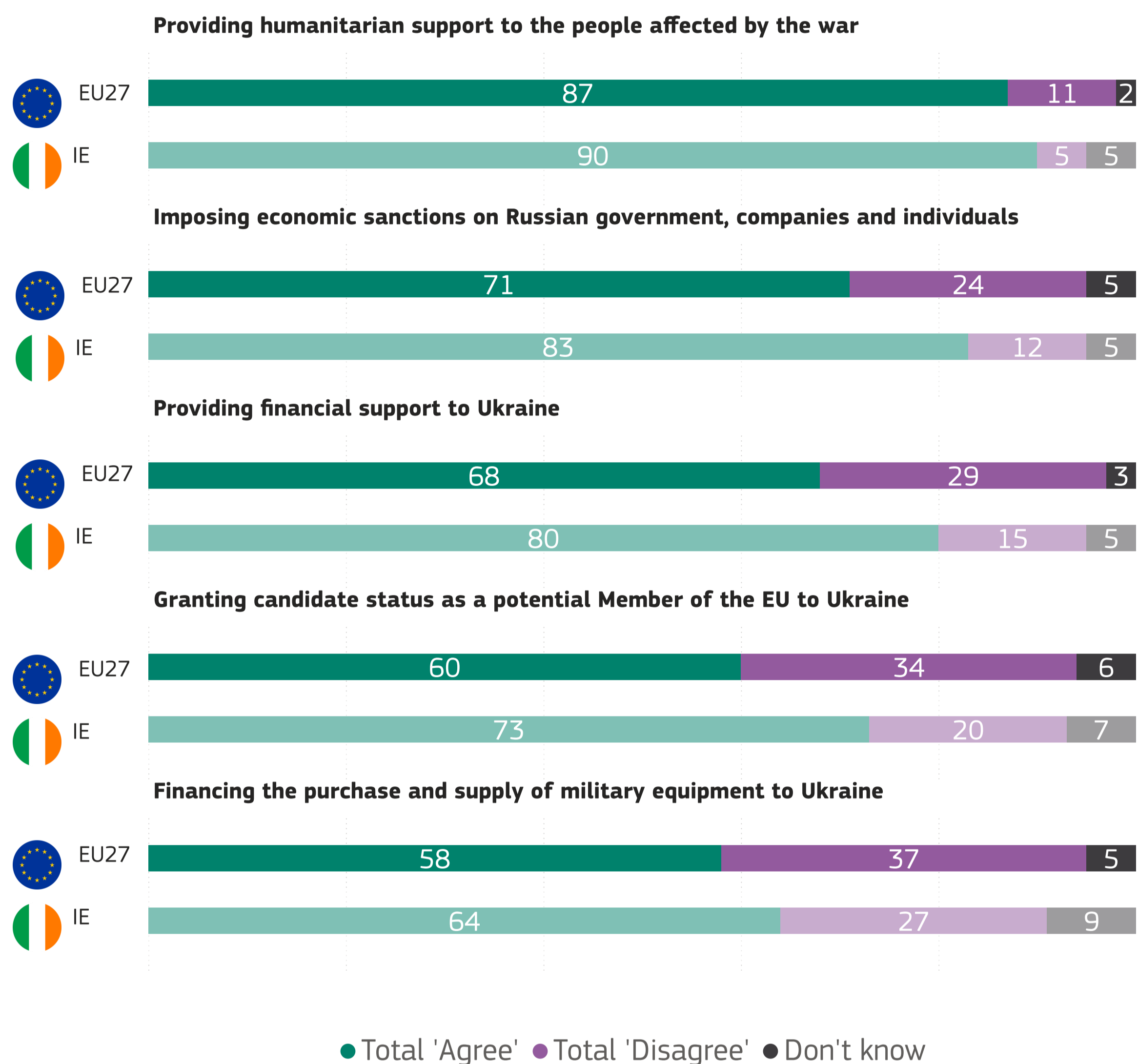
People in the EU's Eastern neighbourhood countries have a lot of things in common with people in the EU



● Total 'Agree' ● Total 'Disagree' ● Don't know

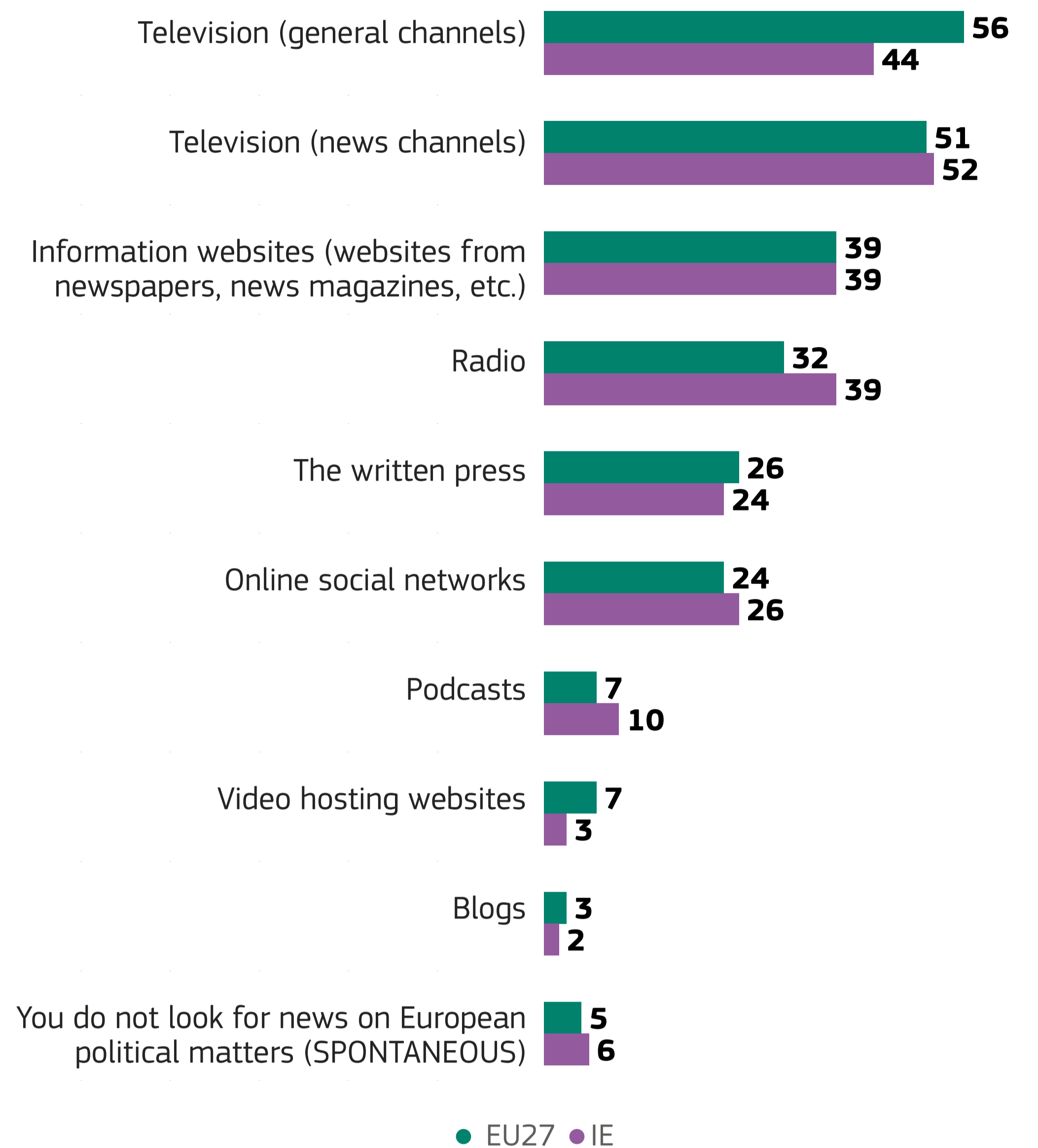
3. THE INVASION OF UKRAINE AND ITS CONSEQUENCES

QD2. The EU has taken a series of actions as a response to Russia's invasion of Ukraine. To what extent you agree or disagree with each of these actions taken? (%)



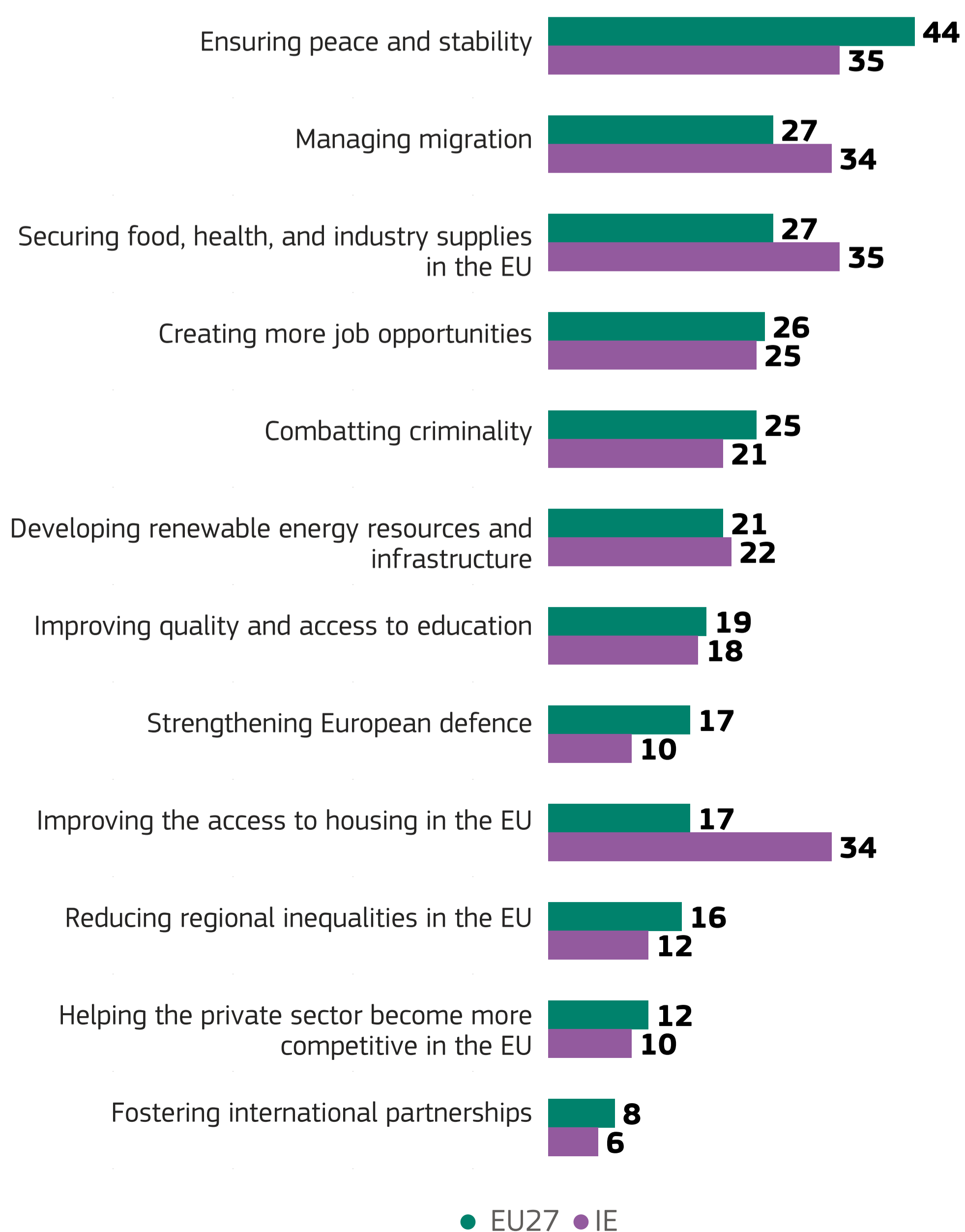
4. MEDIA USE IN THE EU

QE5ab. Where do you get most of your news on European political matters? Firstly? And then? - (%)



5. EU CITIZENS' PRIORITIES

QB7ab. Which of the following actions at the EU level do you think would have the highest positive impact on your life in the short term, i.e. in the next year? First? And then? - (%)



QB8ab. The EU is addressing environmental and climate change issues while promoting prosperity and competitiveness at the same time. Considering this, which of the following domains would you like to see prioritised by EU actions? First? And then? - (%)

